



**SPECIFICATIONS:**

Compact fluorescent recessed downlight with 6" optic with decorative ring.

**Trims**

- 6" open aperture available with specular finish, two recessing variants (Classic and Insider).
- *Classic*: Flange trim for suspended grid or drywall ceilings.
- *Insider*: For integrating with drywall ceilings to give a flush fit.
- The outer, visible part of the reflector is anodized in matte silver, also available in white to create a harmonious overall effect.

**Rough-in**

- Heavy gauge galvanized steel
- Injection molded thermoplastic trim support ring

**Electrical:**

- Intellivolt 120 to 277V 50/60Hz, electronic, programmed start, Class A sound rating. Maximum THD 10%.
- Junction Box: 18AWG wire, rated min. 90°C, solid wire or with tinned ends. Rated for thru branch circuit wiring.

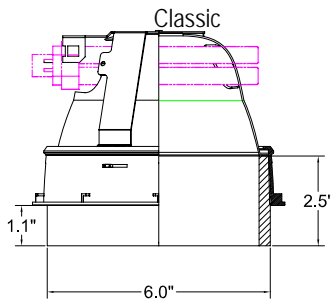
**Lamping:**

- *Shallow Trims* accept: Two (2) 13W PL-C lamps, Two (2) 18W PL-C lamps, Two (2) 26W PL-C lamps.

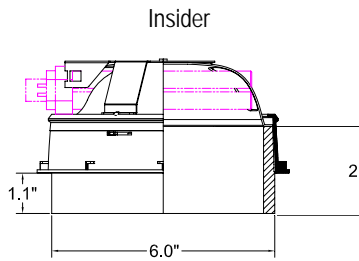
- Ordered separately.

**Compliances:**

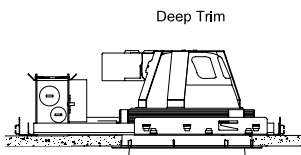
- UL and cUL Listed.



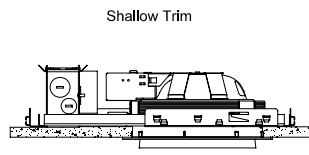
Classic



Insider



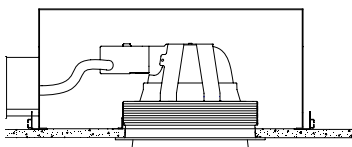
Deep Trim



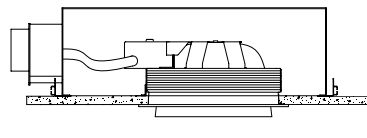
Shallow Trim

Standard Construction-DEEP

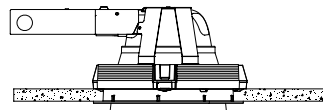
Standard Construction-SHALLOW



IC Rated-DEEP



IC Rated-SHALLOW



Remodel-DEEP only

Rough-in	Height*	Width	Length
std. deep	5.34"	21.45"	30.37"
std. shallow	4.07"	21.45"	30.37"
IC deep	7.29"	12.13"	17.44"
IC shallow	7.29"	12.13"	17.44"
Remodel	5.34"	8.91"	13.16"

\*Measured from finished ceiling to top of fixture.

**Ordering Information:**

**Trims**

To specify trim, choose one item from the selection available in each module. To specify a complete downlight specify a trim and a rough-in.

**Example: 6R.1110.213**  
**6R.**

<input type="text"/>	<input type="text"/>	<input type="text"/>	<input type="text"/>
----------------------	----------------------	----------------------	----------------------

Series	Trim Style	Optic Depth	Optic Finish	Lamp Options
6R.- 6" trim	11- White Ring 12- Red Ring 13- Blue Ring 14- Green Ring 15- Amber Ring	1- Deep 2- Shallow	0- Specular 1- Matte White	213.- 2-13W PL-C 218.- 2-18W PL-C 226.- 2-26W PL-C

**Rough-Ins**

To specify a rough-in, choose one item from the selection available in each module.

**Example: A6R.CD1.213 F**  
**A6R.**

<input type="text"/>	<input type="text"/>	<input type="text"/>	<input type="text"/>
----------------------	----------------------	----------------------	----------------------

Rough-in Housing	Trim Design	Reflector	Installation	Lamp Options	Rough-in Accessories
A6R.- 6" Round Downlight	C- Classic (flange trim) I- Insider (flush trim)	D- Deep S- Shallow	1. Standard Construction 2. IC (Insulated Ceiling) (218 Max.) 3. Remodel (Deep reflectors only) 4. Standard Construction for Air Return Ceiling (218 Max.)	213.- 2-13W PL-C 218.- 2-18W PL-C 226.- 2-26W PL-C	E- Emergency D- Fluorescent Dimming 13W-PLC (120V only) C- 347V- Canada

Refer to trim specifications for compatible lamping.

Ardee Lighting reserves the right to change product specifications without prior notification.

1/15/2008	<p style="margin: 0;"><b>Ardee Lighting</b></p> <p style="margin: 0;">PO Box 1769 · 639 Washburn Switch Rd · Shelby · NC 28151</p> <p style="margin: 0;">T 704. 482.2811 F 800.275.1544 E ardee@jjishelby.com</p> <p style="margin: 0;">www.ardeelighting.com</p>	222338
-----------	---	--------