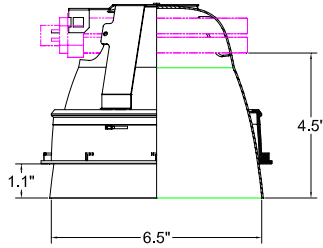




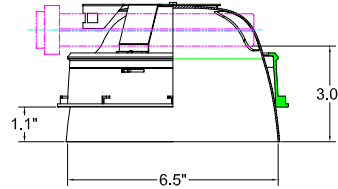
Classic



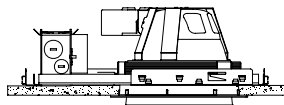
Insider



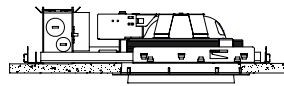
Deep Trim



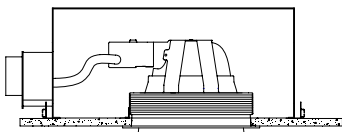
Shallow Trim



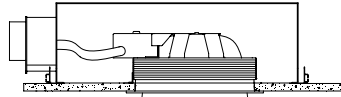
Standard Construction-DEEP



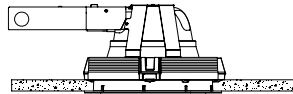
Standard Construction-SHALLOW



IC Rated-DEEP



IC Rated-SHALLOW



Remodel-DEEP only

Rough-in	Height*	Width	Length
std. deep	5.34"	21.45"	30.37"
std. shallow	4.07"	21.45"	30.37"
IC deep	7.29"	12.13"	17.44"
IC shallow	5.23"	12.13"	17.44"
Remodel	5.34"	8.91"	13.16"

*Measured from finished ceiling to top of fixture.

SPECIFICATIONS:

Compact fluorescent recessed downlight with 6" open aperture.

Trims

- 6" open aperture available with specular or matte white finish, two recessing variants (Classic and Insider).
- *Classic*: Flange trim for suspended grid or drywall ceilings.
- *Insider*: For integrating with drywall ceilings to give a flush fit.
- The outer, visible part of the reflector is anodized in matte silver, also available in white to create a harmonious overall effect.

Rough-in

- Heavy gauge galvanized steel
- Injection molded thermoplastic trim support ring

Electrical:

- Intellivolt 120 to 277V 50/60Hz, electronic, programmed start, Class A sound rating. Maximum THD 10%.
- Junction Box: 18AWG wire, rated min. 90°C, solid wire or with tinned ends. Rated for thru branch circuit wiring.

Lamping:

- *Shallow Trims* accept: Two (2) 13W PL-C lamps, Two (2) 18W PL-C lamps, Two (2) 26W PL-C lamps
- *Deep Trims* accept: Two (2) 13W PL-C lamps, Two (2) 18W PL-C lamps, Two (2) 26W PL-C lamps, One (1) 26W PL-T lamp, One (1) 32W PL-T
- Ordered separately.

Compliances:

- UL and cUL Listed.

Ordering Information:

Trims

To specify a trim, choose one item from the selection available in each module. To specify a complete downlight specify a trim and a rough-in.

Example: 6R.0010.213
6R.

<input type="text"/>	<input type="text"/>	<input type="text"/>	<input type="text"/>
----------------------	----------------------	----------------------	----------------------

Series	Trim Style	Optic Depth	Optic Finish	Lamp Options
6R.- 6" trim	00- Open	1- Deep 2- Shallow	0- Specular 1- Matte White	213.- 2-13W PL-C 218.- 2-18W PL-C 226.- 2-26W PL-C 126.- 1-26W PL-T (deep only) 132.- 1-32W PL-T (deep only)

Rough-Ins

To specify a rough-in, choose one item from the selection available in each module.

Example: A6R.CD1.213.E

A6R.

<input type="text"/>	<input type="text"/>	<input type="text"/>	<input type="text"/>	<input type="text"/>	<input type="text"/>
----------------------	----------------------	----------------------	----------------------	----------------------	----------------------

Rough-in Housing	Trim Design	Reflector	Installation	Lamp Options	Rough-in Accessories
A6R.- 6" Round Downlight	C- Classic (flange trim) I- Insider (flush trim)	D- Deep S- Shallow	1. Standard Construction 2. IC (Insulated Ceiling) (218 Max.) 3. Remodel (Deep reflectors only) 4. Standard Construction for Air Return Ceiling (218 Max.)	213.- 2-13W PL-C 218.- 2-18W PL-C 226.- 2-26W PL-C 126.- 1-26W PL-T (deep only) 132.- 1-32W PL-T (deep only)	E- Emergency D- Fluorescent Dimming 13W-PLC (120V only) C- 347V- Canada

Refer to trim specifications for compatible lamping.

Ardee Lighting reserves the right to change product specifications without prior notification.

1/15/2008	Ardee Lighting PO Box 1769 · 639 Washburn Switch Rd · Shelby · NC 28151 T 704. 482.2811 F 800.275.1544 E ardee@jjishelby.com www.ardeelighting.com	222335
-----------	--	--------