

MatreX

Low Voltage Recessed Downlight

MatreX

Adjustable multi-element low voltage MR-16 and AR111 halogen, and MR-16 metal halide recessed downlight series for commercial and residential accent and display lighting.

Features

- A choice of stepped baffle and straight side trim styles.
- Extruded aluminum Trim styles, welded for strong construction.
- Machined aluminum gimbal provides 0°- 30° adjustability and 360° rotation with snap-in / pull-out mounting spring clips for easy lamp replacement.
- Accepts up to (2) two media for halogen sources and (1) one media for metal halide sources.
- Available in Black, White, and Metallic Silver powdercoat painted finishes.

Specifications

Adjustable multi-element low voltage and metal halide recessed downlight.

Trims

- Extruded aluminum frame with welded construction.
- Choice of stepped baffle and straight profile trim styles.
- Black, White, and Metallic powdercoat painted finishes.
- Machined aluminum gimbal provides 0° - 30° tilt and 360° rotation.
- Accommodates up to (2) two media for halogen sources and (1) one media for metal halide sources.

Housing

- 20 gauge steel box with powdercoat painted black finish.
- Galvanized steel mounting wings with vertical adjustment for maximum adjustability. Mounting bars supplied by others.
- Galvanized steel junction box with spring clip mounting tabs for easy removal.

Electrical

- Ceramic socket, pre-wired with high temperature wire leads, provided with housing.
- Rated for feed-thru branch circuit wiring.
- Integral electronic transformer for halogen sources, 120 volt primary, 12 volt secondary, 50/60Hz, and thermally protected.
- Integral electronic ballast, for metal halide sources, 120 volt primary, 12 volt secondary, 50/60Hz, and thermally protected.

Lamping

- MR-16 halogen (50W max)
- AR111 halogen (100W max)
- MR-16 metal halide (20W)

Compliance

- UL/C Listed for damp locations.

Ordering information

To specify a complete catalog number, choose one item from the selection available in each module.

AMX	XX	-XXX	-X	-X
-----	----	------	----	----

Series

AMX	MatreX
-----	--------

Element style

AMX	01	1LT MR-16 halogen
AMX	02	2LT MR-16 halogen
AMX	03	3LT MR-16 halogen
AMX	04	4LT MR-16 halogen linear
AMX	05	4LT MR-16 halogen square
AMX	08	1LT AR-111 halogen
AMX	09	2LT AR-111 halogen
AMX	10	3LT AR-111 halogen
AMX	11	4LT AR-111 halogen
AMX	21	1LT MR-16 metal halide
AMX	22	2LT MR-16 metal halide

Trim finish

AMX	XX	-111	Black
AMX	XX	-222	White
AMX	XX	-333	Metallic silver

Transformer

AMX	XX	-XXX	-E	Integral electronic
AMX	XX	-XXX	-12	Remote (halogen only)

Trim style

AMX	XX	-XXX	-X	-B	Step Baffle
AMX	XX	-XXX	-X	-S	Straight Side

Consult factory for custom styles and finishes

Lamps and Accessories

Refer to page 92 for lamps and page 93 for accessories.

Available colors

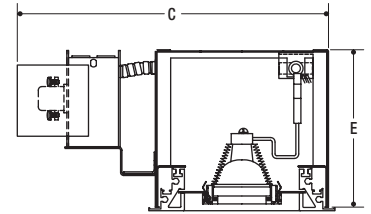
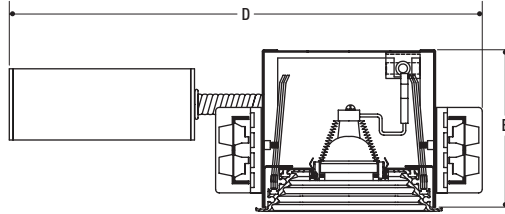
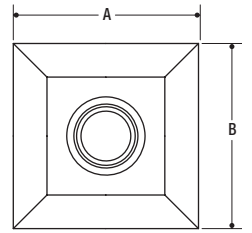
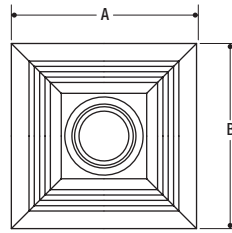
BLACK

WHITE

METALLIC SILVER

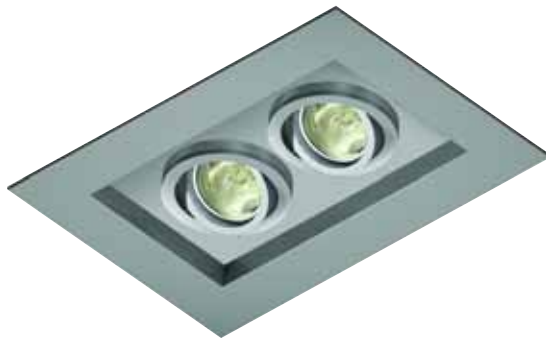


1 lamp element
Other elements available
Step Baffle trim style shown

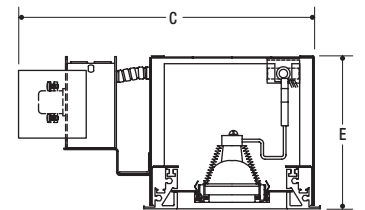
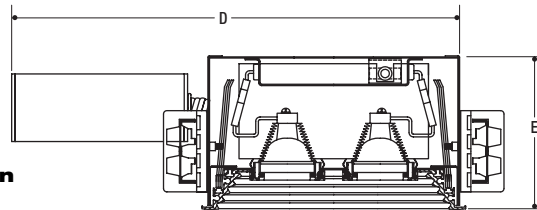
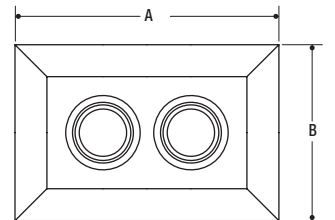
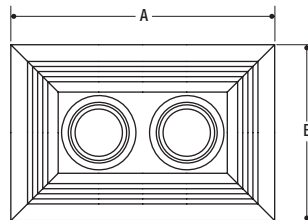


1-Light MatreX

Lamp Type	A	B	C	D	E
MR16 halogen	6 ¹ / ₂ "	6 ¹ / ₂ "	11"	15 ³ / ₄ "	5 ¹ / ₂ "
AR111 halogen	9 ³ / ₄ "	9 ³ / ₄ "	14 ¹ / ₄ "	16 ³ / ₄ "	5 ¹ / ₂ "
MR16 MH	6 ¹ / ₂ "	6 ¹ / ₂ "	11"	15 ³ / ₄ "	5 ¹ / ₂ "



2 lamp element
Other elements available
Straight Side trim style shown



2-Light MatreX


Lamp Type	A	B	C	D	E
MR16 halogen	9 ³ / ₄ "	6 ¹ / ₂ "	11"	16 ³ / ₄ "	5 ¹ / ₂ "
AR111 halogen	16"	9 ³ / ₄ "	14 ¹ / ₄ "	21 ³ / ₄ "	5 ¹ / ₂ "
MR16 MH	9 ³ / ₄ "	6 ¹ / ₂ "	11"	16 ³ / ₄ "	5 ¹ / ₂ "

Ardee Lighting is a Philips group brand

**639 Washburn Switch Road
P.O. Box 1769
Shelby, NC 28151
Phone: (888) 442-7333
Fax: (800) 275-1544 / (704) 484-0818
www.ardeelighting.com
ardee@jjshelby.com**

© 2008 Philips Group.
All rights reserved. Certain
products illustrated in this
catalog may be protected by
applicable patents and patents
pending. Ardee Lighting will
aggressively defend all
of its intellectual property.
We reserve the right to
change details of design,
materials and finishes.

A.I.A. Division 16
Brochure MatreX 2/08

 Some luminaires use fluorescent or high intensity
discharge (HID) lamps that contain small amounts
of mercury. Such lamps are labeled "Contains Mercury"
and/or with the symbol "Hg." Lamps that contain
mercury must be disposed of in accordance with
local requirements. Information regarding lamp
recycling and disposal can be found at
www.lamprecycle.org.

Printed in the U.S.A.