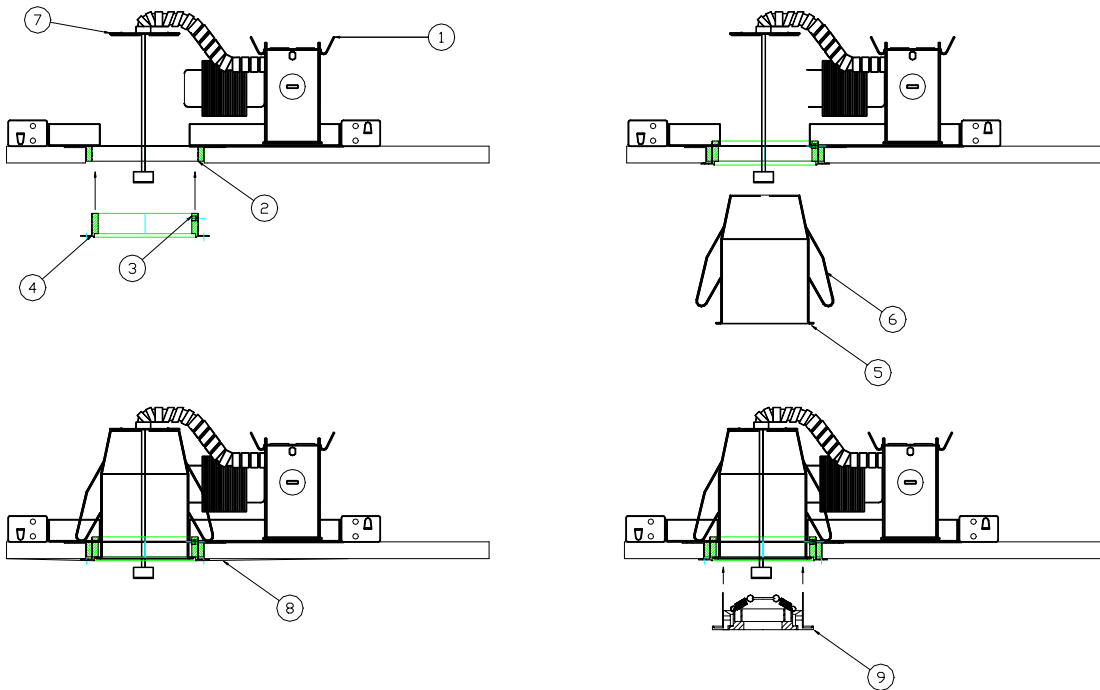

ARDEE LIGHTING, INC.

FLUSH TRIM RING (FOCUS & VARIANTI TRIMS) INSTALLATION GUIDE

READ AND SAVE THESE INSTRUCTIONS:

WARNING: Risk of Fire and Shock. This product is to be installed only by a qualified electrician. To avoid shock hazard, be certain that the power is turned off before connecting fixtures to supply lines. Live wires present potential for fatal shock hazard.



INSTRUCTIONS:

- A.-** Install the Rough-in (1) and accurately cut the opening for the Trim Ring (2). Install dry wall over Rough-in (1).
- B.-** Thread the Flush Trim Ring (4) into the Rough-in (1) and against ceiling, secure in place by threading Set Screw (3) into Trim Ring (2) with M4 Hex Key Wrench (Supplied).
- C.-** Install the Cap (7) on top of the Finishing Section (5) (If applicable).
- D.-** Insert Finishing Section (5) fully into the Flush Trim Ring (4) opening. Screw the Retaining Clips (6) to secure Finishing Section (5) snugly against Flush Trim Ring (4).
- E.-** Apply Smooth Set (8) around Flush Trim Ring (4) covering the flange as shown. Using a 12" tapping knife taper the Smooth Set (8) away from the edge of Flush Trim Ring (4) out to a 12" radius. At 12" away the Smooth Set (8) should become completely flush with the Drywall.
- F.-** Install the Trim (9) into Flush Trim Ring (4). (SEE TRIM INSTALLATION GUIDE).

ARDEE LIGHTING, INC.

A Subsidiary of JJI Lighting Group, Inc.
PO Box 1769, 639 Washburn Switch Rd.
Shelby, NC 28151
(704)482-2811 • Fax (800) 275-1544

www.ardeelighting.com

e-mail: ardee@jjishelby.com

024037

11/06/2003