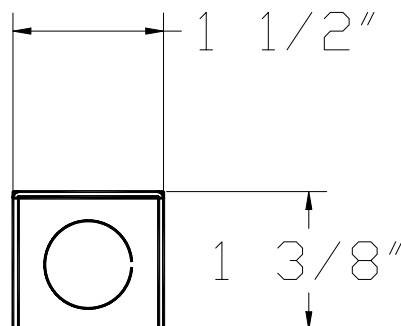
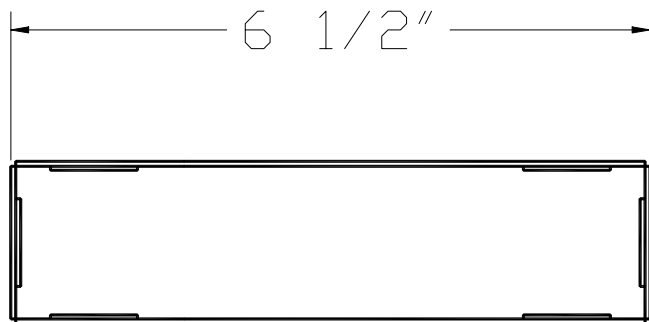


LOW VOLTAGE TRANSFORMER: TE152

ELECTRONIC TRANSFORMER FOR
REMOTE INSTALLTION APPLICATIONS



SPECIFICATIONS:

1. **Housing:** Formed steel enclosure, painted finish, provided with 1/2" Knock-outs.

2. **Thermal Ratings:** Max. case temp. **90C** Max. ambient temp. **35C**

3. **Electrical Ratings:** Min.load: **50W** Max. load: **150W** Input:**120V 60Hz**

Output voltage @ 150W: **11.8V, 30 kHz** Output current @ 150W: **12.56A**

Power Factor: **0.985** Max. harmonic distortion: **14.8%** Input current: **1.25A**

4. **Protection:** Auto-reset electronic short circuit and overload protection. Auto-Reset thermal cut-off @ 125C. Fuse on the primary.

5. **Dimming:** Compatible with dimmers used for incandescent lamps. Consult factory for compatibility with architectural lighting control system applications.

6. **Compliances:** UL Listed, CSA Certified for use with Ardee Lighting Low-Voltage Lights.

Ordering Information:

Catalogue Number: Watts: Input Voltage

TE152 50W to 150W 120V AC

Ardee Lighting reserves the right to change product specifications without prior notification.

2/5/2008	Ardee Lighting PO Box 1769 · 639 Washburn Switch Rd · Shelby · NC 28151 T 704. 482.2811 F 800.275.1544 E ardee@jjishelby.com www.ardeelighting.com	022047
----------	--	--------